

KÖSTER

Maschinenfabrik und Gießerei



Media winch H 250 B

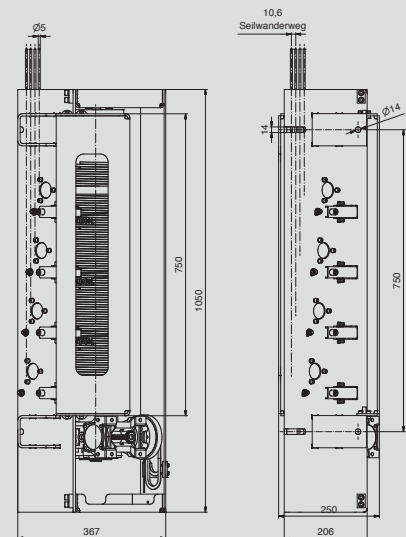
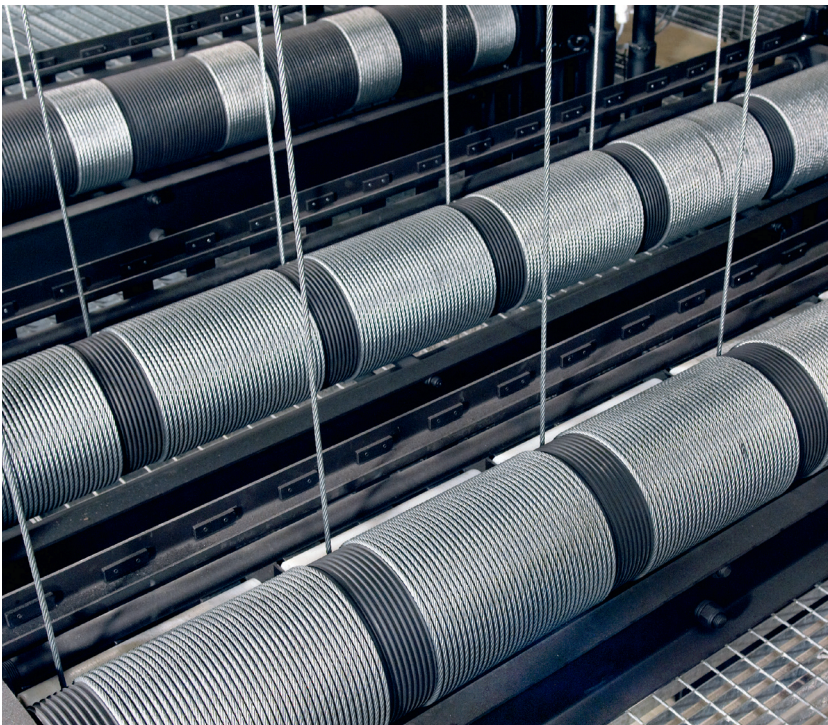
Winches - stages and banners

The view backstage

Modern stage technology for light, sound and movement

A performance will be successful if all of the movements on stage are perfectly coordinated. Extremely heavy loads are sometimes suspended above the actors' heads. Unlimited safety and flexible control systems - the big stages of the world put their trust in winch technology from **KÖSTER**.

KÖSTER is a specialist in the development and production of winches and accessories for public areas in which persons are standing beneath heavy loads. Experience and competence in the planning and manufacture of stage winches are the guarantee of safety and long-term functionality.



The scenery is moved simultaneously using four winches with amazing cable control, using a battery-powered drive and, in another stage of expansion, using an electric drive.

Lightweight, mobile and cost-effective. The new media winch.

Our new modular point hoist winch H 250 B has an extremely compact design. Its vertical arrangement makes it possible to vary the height of the drums.

This media winch impresses with its compact design, ease of handling and quick and easy installation. It has a modular design, and can therefore be adapted to practically any customer requirement in an uncomplicated and above all cost-effective way.

This makes this mobile, lightweight media winch extremely interesting to small theatres, theatre clubs and schools.

Perfect stage technology

Silent and invisible

Our stage and banner winches are flexible in terms of design and load-bearing capacity. Of course, they always comply with all of the relevant directives and standards for any use in theatres, multi-purpose rooms, auditoriums and similar public rooms.

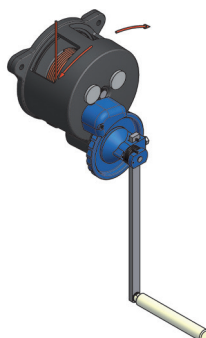
Media winch H 250 B



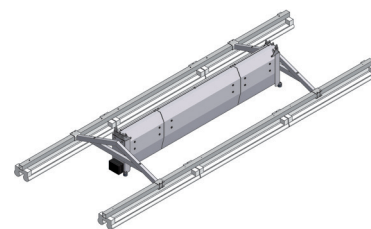
Stage winches Electric drive *



Stage winches Manual operation *



Banner winch



Technical data (in standard area)

Load capacity	250 kg
Speed	3 m/min
Lifting height	6 m
Drum length variabel	

Technical data (in standard area)

Load capacity	100-1600 kg
Speed	2,7 - 36 m/min

Technical data (in standard area)

Load capacity	100 - 600 kg
Lifting height	3,8 - 7,7 m

Technical data (in standard area)

Load capacity	100 kg
Holding load	1000 kg
Speed	6 m/min

Safety

Limit switch limitation	<input checked="" type="checkbox"/>	Wound in single layer	<input checked="" type="checkbox"/>	Independent dual brake system in accordance with BGV C1	<input checked="" type="checkbox"/>
Overload monitoring	<input checked="" type="checkbox"/>	Protective sheet metal panelling	<input checked="" type="checkbox"/>		

Control console, deflection rollers and the necessary mounting brackets are included in the scope of delivery of the products with electric drive that are described here. We would be pleased to take care of installation.

* The illustrations that are shown represent usage examples.

Contact

Wolfgang Haupt
Sales Director, Winches
P +49 (0)481 797-151
M +49 (0)176 17972003
w.haupt@koester-heide.de

Michael Gerstenberg
Sales Engineer, Winches
P +49 (0)481 797-117
M +49 (0)176 17972001
m.gerstenberg@koester-heide.de



KÖSTER

Maschinenfabrik und Gießerei

Pumps

Winches

Pool Technology

Cast and Steel Components

Steel Water Structures and Fittings

Friedrich Köster GmbH & Co. KG
Friedrichswerk 1-7
25746 Heide
Germany

T +49 (0)481 797-0
F +49 (0)481 797-199
info@koester-heide.de
www.koester-heide.de

Seit 1861.